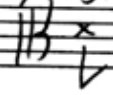


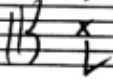
Streich instr.:

1.) "b"



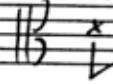
Saiten dämpfen, Stoppschlag mit Fingerkuppe
(ohne Nagel!) bei F-Löchern auf die Decke

2.) "s"



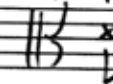
Streichen auf unterer Hälfte des Saitenhalters

3.) "k"



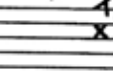
mit einer Fingernagelplatte auf Zarge
direkt neben dem Griffbrett schmalzen

4.) "p"



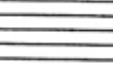
Saiten dämpfen, Stop-/Schwartzschlag mit
mehreren Fingerknöcheln auf Decke

5.) "x"



den Vorschlag wie ein kurzes "k", sofort
mit Bogen über Decken-/Zargenkaute bei den
F-Löchern streichen

6.) "s"



streichen über Decken-/Zargenkaute bei den
F-Löchern

$\text{♩} = 72-80$

1. *eyes.*

Dynamics: *sp*, *mf*, *f*
 Articulations: accents, slurs, *pizz. non arp.*, *arco non arp.*
 Bass clef dynamics: *sftz*, *f*, *mf*

3b

Dynamics: *p*, *mp*, *f*
 Articulations: accents, slurs, *pizz. non arp.*, *arco armonici!*, *sul I*

6

Dynamics: *sp*, *mp*, *mf*, *p*
 Articulations: accents, slurs, *pizz. non arp.*, *pizz.*, *trem.*

15

Treble clef: f f sfz sfz fp fp p pp $U - \sigma -$
 Bass clef: f f k p x x $pizz.$ $arco$
 Lyrics: "s" "k" "p" "k" "x"

18

Trem.!
 Treble clef: pp $n -$
 Bass clef: $step$ mf $ppmolto$ fp
 Lyrics: "a e i e a i e a ||: ovo...||" "arghol" "x"

21

Treble clef: pp pp p pp
 Bass clef: $ppmolto$ $ppmolto$ $ppmolto$
 Lyrics: "x" "x" "x"

24

Vocal line: $v-u- \quad k, \quad v-u-$

Piano accompaniment: $f_p \rightarrow m, \quad b+, \quad b+, \quad b+$

Performance markings: *sultasto*, *mp dolce*

26

Vocal line: $(-u-) \quad -k-(-) \quad -k, \quad h,$

Piano accompaniment: $b+, \quad b+, \quad b+, \quad b+, \quad b+, \quad b+, \quad b+, \quad b+$

Performance markings: *poco sul pont., slaut!*, *poco vibr.*, *sul pont., slaut!*, *non vibr.*, *poco vibr.*, *ord.*, *Pmolto*, *mf*, *mp*

28

Vocal line: $b-id, \quad b \quad b, \quad b \quad b, \quad n-d'f- \quad r-k, \quad h-ch$

Piano accompaniment: $b+, \quad b+, \quad b+, \quad b+, \quad b+, \quad b+, \quad b+, \quad b+$

Performance markings: *sul pont., slaut.*, *non vibr.*, *poco vibr.*, *ord.*, *sul pont., slaut!*, *non vibr.*, *poco vibr.*, *poco espr.*, *mf*, *mp*

30

Handwritten musical score for measures 30-31. The top staff is in treble clef, and the bottom staff is in bass clef. The music features complex rhythmic patterns with triplets and slurs. Dynamic markings include *p*, *mf*, and *pp*. Performance instructions include *molto sultasto non vibr.*, *sul pont. poco vibr.*, and *sul pont. slaut.*. There are also handwritten notes "b" and "k" above the bass staff.

32

Handwritten musical score for measures 32-33. The top staff is in treble clef, and the bottom staff is in bass clef. The music includes slurs, triplets, and dynamic markings like *f*, *pp*, and *p*. Performance instructions include *trem.!*, *sultasto*, and *sul pont. slaut.*. There are also handwritten notes "e-", "i-", and "uuu...".

35

Handwritten musical score for measures 35-36. The top staff is in treble clef, and the bottom staff is in bass clef. The music features dynamic markings like *pp*, *mp*, and *p*. Performance instructions include *pizz.*, *arco*, *col legno batt.*, and *col legno halbe Haer, halb Stange*. There are also handwritten notes "th'f-" and "poco".

39

m-, p, pp, mp, mf, sp, sfz
 bb, b, b
 collegno batt., arco
 "b" "b" "f" "h"

42

soltasto, poco sol pont., ord., sol pont., flaut.
 pp, p, f, sf

45

p, pp, p dolce, mp, p
 S-, B-, S-, che-, -k, che-, che-
 soltasto, collegno, halb Meer, halb Stange, sol pont.

48

mp dolce
(-e-)

sul tasto, flaut.!

sul pont. pizz.

mf pp f p mf f sfz

50

pp

sfz

arco, ord.

sul pont.

trem.

cres.

Ps... t.

pp mp p mp

53

mf f

sfz

pposs.

cres.

sfz fp pp

sul pont. pizz.

arco

sul tasto, spiter trem.

ord. non trem. 11/4

64

(-a-), e-, i-, mp, uu...
 pizz., arco, pizz., arco, solpizz.
 sfz, f, sfz, sfz esp., sfz

67

bb, k, f, p, x (sfz), e-i
 "b" "k" "f" "p" "x"
 p, sfz, sfz, f, sfz, arco ord. -> solpizz., mp, mf, pp

69

i - a - e - a - i, "arghchi"
 "seufzed"
 pizz., arco, soltasto, arco, non vibr., arco, vibr.
 pp, p, mf, p, sfz, mp

71 "stöhrend" "wutanbrant/-schürend"

> p f < f

"arghoch" - "arghch"

trien 3

molto fff

sub post. 5

f

73

detaché! → ord.

ff

3 3 3 3

→ poco sub post.

ord. collegno → halbhaut/sait

mp

i-s-s-

77

(b) -s- s- k

p i-s-k, k-

mf f, pp

→ sub post. → sub tasto

arco, sub tasto

"k"

"f"

mf > < mf > p p < fp >

80

isk-ngh nam- ste

trem., soltasto

sub. solpout.

mf > pp *pp* *mp: pp* *mf* *ste* *p*

83

-n- (-h-) wi-

soltasto

pp *poco* *poco* *poco* *poco*

85

(-i-) -l- wil ih ga-

solpout.

pizz. alagui-taru

p *mf* *pp* *p* *molto*

dolce!

88

dolce

(-a-) -n, milih gan-

arco, sul tasto

sfz *pp* *p* *mf* *f* *p poco*

89

pp *pp*

sub pont. *ord.*

91

-u- -x (ss), nu- x(-u),

sub pont. *sol tasto*

p *dolce*

94

mf < f > p
nu wil ih-, x(-ih-) wil ih ten-, f(-en-)

sul pont.
sul tasto, flaut.

pp < p dolce

96

fp
ten-, f(-en-) u- x(-u-)

non flaut.
flaut.
sul pont.

mp > pp < p < mf

97b

f # #
rei-don, p(-a-), u- x -rei-do-

sul pont.
sul tasto
ovd.

"x" trem.
f fp pp espr.

99

(#) (-o-) p-n p, k, x-s, sla-ha-n-

ord. → sul pont.

mf sfz mf sfz sfz

mf sfz sfz sfz sfz

101

estatico!

mfz f espri. sla-han, sla-han,

mf sfz sfz sfz sfz

mf sfz sfz sfz sfz

103

sfz f sla-han mit ten, mit ten col-bo-

pizz. arco, sul pont. sim. ord. sul pont.

f sfz sfz sfz sfz

f sfz sfz sfz sfz

105

(ss)
 (-o-)
 -u-
 "p" trém.
 pizz.
 arco
 trém.
 step

107

hysterisch!
 (-u-)
 f
 > p
 te- e sla-han
 sol pont.
 ff

109

(-han-),
 sfz
 sla-han
 sfz sempre
 mi-it ten colbor,
 trém.
 sfz
 mp
 step

118

Annotations: *step*, *p*, *fp*, *mf*, *poco*, *trav.*

121

Annotations: *mf*, *sta*, *poco*, *sf*, *poco*, *etc.*, *trav.*

124

Annotations: *pk*, *e*, *p*, *sf*, *mf*, *poco*, *trav.*

127 *trem. (stimulos)*

Handwritten musical score for measure 127. The top staff is a treble clef with a 7/8 time signature. It contains a melodic line with various dynamics (f, p, pp, sfz, k) and articulation marks (accents, slurs, "x" marks). The bottom staff is a bass clef with a similar melodic line and dynamics (pp, mf, sfz, fff, ff).

1306 *trem.*

Handwritten musical score for measure 1306. The top staff is a treble clef with a 7/8 time signature. It contains a melodic line with various dynamics (f, sfz, f, sfz, sfz, sfz, sfz, sfz) and articulation marks (accents, slurs, "x" marks). The bottom staff is a bass clef with a similar melodic line and dynamics (fff, p, sfz, sfz, sfz, sfz, p).

1336

Handwritten musical score for measure 1336. The top staff is a treble clef with a 7/8 time signature. It contains a melodic line with various dynamics (f, sfz, sfz, sfz, sfz, sfz, sfz) and articulation marks (accents, slurs, "x" marks). The bottom staff is a bass clef with a similar melodic line and dynamics (f, sfz, sfz, sfz, sfz, sfz, sfz).

136

Handwritten musical score for measure 136. The top staff is a vocal line with lyrics: "a - e o - u -", "- o - u - o", and "a - e - a -". The bottom staff is a piano accompaniment with various dynamics and markings: *sf*, *ff*, *sfz*, *ff*, *cres.*, and *sfz*. There are also some numerical annotations like "5" and "3" above the notes.

137b

Handwritten musical score for measure 137b. The top staff is a vocal line with lyrics: "- e -", "- a a - e - i -", and "arghed!". The bottom staff is a piano accompaniment with dynamics like *ff*, *ffff*, and *pressat. es.*. It includes performance instructions: "sul 3 corde", "sul 4 corde", "Schrechtl. Schrei.", and "arghed!". There are also some numerical annotations like "3" and "5" above the notes.